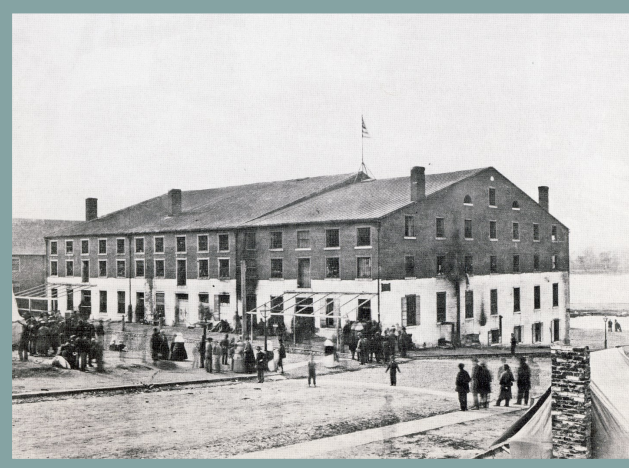




A Soldier's Walk Home

By Percia Swift

As the Civil War came to a close, Washington Duke was dropped off in New Bern, North Carolina. At the time, he had a Confederate five-dollar bill, which he sold for fifty cents in silver. With little money, he embarked on a 135 mile journey back to his homestead and children.



According to our sources, Washington Duke was captured by Union troops in 1865 and imprisoned in Richmond's Libby Prison. Gaining parole after the April 6th surrender, he was sent by ship to New Bern, NC. From there, he walked home to Durham. (Courtesy Civil War Photograph Collection, the Library of Congress)

Although a distressing tale, Washington's story is no different than many Confederate soldiers. Between 1915 and 1922, more than sixteen hundred

questionnaires were completed by Civil War Veterans. These stories, captured in *The Tennessee Civil War Veterans Questionnaires*, weave to-

gether a firsthand account of the war and antebellum southern life. Skimming through the five volumes of questionnaires, you will find a range of stories describing soldiers' journeys home. These accounts range from walking short distances, taking trains part of the

way, to walking over two hundred miles to return home.

Soldier George W. Austin

(Continued on page 4)

Inside this issue:

A Soldier's Walk Home	1, 4
Upcoming Events	2
From the Site Manager's Desk	3
In Memorial	4
Sponsorship Opportunities	5
Sponsorship Form	6

Help Us Save Paper!

We at Duke Homestead are doing our best to conserve the environment. If you do not already receive the newsletter in digital form, please contact us via email at duke@ncdcr.gov with your name and preferred email so that we may send you future copies of *GOLD LEAF* via email. Thank you!



About GOLD LEAF

The Duke Homestead Education and History Corporation publishes *GOLD LEAF*. The Corporation is a non-profit organization dedicated to the development of the Duke Homestead State Historic Site and Tobacco Museum. The museum is open Tuesday through Saturday, from 9 a.m. until 5 p.m. Visit the website, dukehomestead.org, for more information. This newsletter is published semiannually and is available free of charge.

For more information, write:
Duke Homestead Education and History Corp.
2828 Duke Homestead Road
Durham, NC 27705
Or e-mail: duke@ncdcr.gov.

DHEHC President:
GOLD LEAF Editor:
Printing:

Thomas Shaw
Julia Rogers
Sir Speedy



Financial Report

Mary Bell
Treasurer

The funds of the Duke Homestead Education and History Corporation as of April 1, 2015 are as follows:

General Fund Savings	\$2,835.88
General Fund Checking	\$5,555.61
Sales Desk / Gift Shop Inventory:	\$14,120.40
Scotttrade Account:	\$45,020.07
Total Assets:	67,532.06

Upcoming Events

May 23, 2015 10:00 a.m. to 4:00 p.m.

Bull Fest

At the culmination of our Soldier's Walk Home event, greet our soldier as he finishes the final leg of his journey from New Bern. Get back to the Bull City's roots and help us celebrate everything that is Durham from our history to our local artists, food, and businesses!

Free

July 11, 2015 10:00 a.m. to 4:00 p.m.

Pork, Pickles and Peanuts: Tastes of NC

North Carolina's food history and heritage take center stage for the day! This festival includes a barbecue cook-off and juried pie competition. Throughout the day, visitors can enjoy historic cooking demonstrations, and browse our local arts and crafts vendors.

Free

August 8, 2015 10:00 a.m. to 4:00 p.m.

Summer Children's Festival

The perfect event for families to spend the day together! Throughout the day enjoy music and dancing, historical crafts and activities, and games.

Free

September 12, 2015 10:00 a.m. to 4:00 p.m.

Harvest and Hornworm Festival

In the morning, see demonstrations of historic tobacco harvesting, stringing and curing. In the afternoon, hear the sounds of the only tobacco auction left in Durham. Throughout the day enjoy the hornworm race, MoonPie eating contest, musical entertainment, craft vendors, refreshments and more.

Free

From the Site Manager's Desk by Mia Berg



Mia Berg is the Interim Site Manager through August of 2015.

As per usual, the Duke Homestead remained busy during the Fall and Winter seasons. The site offered many programs including the Bull City Coop Tour, the Widows and Wakes event as well as being involved with the Looping Contest and Mock Tobacco Auction at the State Fair. November was filled with school groups as December's Christmas events quickly descended upon us. We held the Christmas Traditions tours for young school children, the ever popular Christmas by Candlelight Tours, and the second annual Victorian Family Christmas. All of these events were well attended and enjoyed by visitors.

On January 1, Jennifer Farley took a permanent position as the West Region Supervisor, leaving Duke Homestead after

7 years. The staff, volunteers and support group members will miss her, but we are excited for her as she enters this new aspect of her career with Historic Sites.

The staff is still planning for our Civil War 150th event, A Soldier's Walk Home, in recognition of Washington Duke's walk home from New Bern to his house after the Civil War in 1865. From May 11-May 23, a reenactor, Philip Brown, will be walking the 166 mile journey to honor not only Washington Duke, but all soldiers returning home from war. He will begin the walk at Union Point Park in New Bern and will take him through towns like Kinston, Goldsboro, Smithfield, Raleigh, Durham and culminating at Duke Homestead on May 23rd as part of Bull Fest.

As you can see from our front page article, Washington Duke's experience of walking home was one shared by many soldiers after the war.

We will have a support team travel along with

Philip for the two weeks and we are working closely with various Partner Organizations to make this unique event happen.

We are actively seeking any support through monetary or in kind donations, as well as participation in the events surrounding his walk home in Durham. To learn more about the event visit www.asoldierswalkhome.com.

You can find information about how to sponsor the event on page 5 of the newsletter. Come out and welcome Philip on the 23rd at the site as we celebrate his homecoming!



We saw quite a bit of snow on the homestead this winter. Wintery weather even shut down the site for a few days. Staff are looking forward to spring!

A Soldier's Walk Home *continued*

(Continued from page 1)

recounts his experience during the war. He stated that he "...was sorry fead. [his] clothing was mighty bad [his] fare was bad all through the war." He was discharged "neare Raleigh North Carliner." He got sick in Mississippi and was in care of a doctor for seven weeks and traveled "a foot" from Raleigh, NC to Montgomery, Alabama, a distance of almost five hundred miles.

David Moss's trip home was "very disheartening," he remembered, "sometimes [I] could get something to eat and sometimes nothing 2

days at one time just one small piece corn bread finding all burnd houses Deserted & Burned."

Robert Austin recalled that "our clothing were very good. Exposed to cold, hunger and disease. We took a good many off of dead yankies...Sleep out on cold ground from which we suffered considerable." Austin rode and walked part of the way back home. He remembered "the 1st day I walked 45 miles and the next day I was so sore I did not try walking. I hired an old poor horse from a negro and rode ten miles and walked [the] way home."

Soldier Ephriam Oliver

Randle also trekked a great distance to return home. He "went through North Carolina, South Carolina, Georgia, Alabama and Mississippi into Tennessee; and walked 500 miles of the distance."

These brief summaries showcase only a small amount of veteran voices. Some fared better than others, using horses and trains to aid them, some were shoeless with limited food and others had to dodge Union forces to return home safely. Like Washington Duke, these men, tired and defeated from war, also had limited options for their return home.

In Memoriam

On March 2nd, Duke Homestead said goodbye to long-time support group member and site volunteer, Wilson Crabtree. Wilson leaves a legacy of thirty-six years of service to Duke Homestead, where he shared his first hand knowledge of life lived on a North Carolina tobacco farm with visitors. Wilson could be found every September at the Pack House during the annual Harvest and Hornworm festival. In recent years he took on the important job of "keeping the leaves in order" on the Tobacco Queen's dress during the Mock Auction. Armed with a spray bottle filled with water, Wilson dutifully kept the leaves from drying out for each year's queen, who wore a dress made entirely out of tobacco. It was a playful and a silly roll and one that was enjoyed all around. We are thankful for celebrate the gift of Wilson Crabtree's life.



A Soldier's Walk Home Sponsorship

Philip cannot make this journey alone. Duke Homestead is looking for monetary and in-kind donations which will help support this endeavor. Items we are currently in need of include:

Support Team Supplies: Philip's support team is in need of bottled water (~\$50), pit-stop snacks (~\$100), a first aid kit (\$45), and gas for the support team vehicle (\$100). Philip himself is in need of period shoes to make the walk (\$250).

Documentation Tools: We will be documenting Philip's journey and will need a Go-Pro Camera and rig (\$300) as well as lap top (~\$300) and mobile hotspot (\$150) to make real time on-the-route updates on social media.

Celebration: Help us to welcome Philip home by supporting the Bull Fest celebration which will take place the day he arrives at Duke Homestead. The welcome home dance requires a large tent (\$1,000) and fund for live music (\$750).

Media: Get the word out about the walk and the events along the way by sponsoring posters and flyers (\$350), event signage (\$450), and ads in local print or online publications.

If you would like to sponsor Philip's walk home, turn the back page of the Gold Leaf Newsletter and fill out and send in the Sponsorship Form.

You can also download the Sponsorship Form from the event website, asoliderswalkhome.com.

To the right, you will find descriptions of the tiered levels of sponsorship and sponsorship rewards available for this event

The site is also accepting in-kind donations. Sponsors will be rewarded based on the value of their donation.

Weary Feet Sponsors

\$1 - \$100 level

Recognition as a sponsor in the Sponsor Section of the website

Individual/ Brand Recognition on the Duke Homestead Facebook Page and Twitter account and in the Gold Leaf Newsletter

Mile Marker Sponsors

\$101 - \$500 level

Same recognition as Weary Feet plus:

Individual/ Brand recognition (brand size small 3x5 in.) on the traveling sponsor banner which will be present at all stops and events

Journey Sponsors

\$501 - \$1,500 level

Same recognition as Mile Marker (with medium sized brand on sponsor banner) plus:

Individual/Brand recognition (size small) on the support team vehicles which will be traveling the route with Philip and will be present at all stops and events

Logo/ Brand recognition on all printed promotional materials – including posters and event programs

Way Home Sponsors

\$1,501 + level

Same recognition as Mile Marker (with large sized brand on sponsor banner and large brand on decal) plus:

Individual/ Brand recognition on all printed promotional materials – including posters and event programs

Recognition as a Way Home tier sponsor in all press releases

10 x 10 Booth space for your company at the Bull Fest event



GOLD LEAF

Duke Homestead Education
and History Corporation
2828 Duke Homestead Road
Durham, NC 27705

Phone: 919-477-5498
Fax: 919-479-7092

Non-profit Organization
U.S. Postage
PAID
Durham, NC
Permit #951

Address Service Requested

Submit this form along with a check made payable to **The Duke Homestead Education and History Corporation** to the address below.

Company/Individual

Name: _____

Address: _____

City: _____

Zip Code: _____

Telephone: _____

Fax: _____

Email: _____

Contact Name: _____

Donation Amount: \$ _____.

Sponsorship Level:

Weary Feet \$1 - \$100

Mile Marker \$101 - \$500

Journey \$501 - \$1,500

Way Home \$1,501 +

In-Kind Donations: If donating, please include a description of the estimated value of your item(s). In-Kind donations are subject to board approval. In-kind donations will receive sponsor recognition based on the value of the donated items.

